









Required fields are marked with an asterisk. You won't be able to save your assignment until you've filled in these fields.

### Assignment Options:

-  Assign to one or more students
-  Align Learning Objectives
-  Lock
-  Submissions Enabled/Disabled
-  Visible to Students
-  Grade Statistics
-  Comments Enabled/Disabled
-  Copy the assignment to a different course

## How to Create an Assignment

Assignments let you enter tasks for students to review, download, and submit, completely within Schoolology or in tandem with other resources. You can use each assignment as a graded item in conjunction with the Schoolology Gradebook.

1. Point your cursor at the spot where you want to add the assignment. Wait for the green dotted line to display and click it to expand a dropdown menu you can use to add content to the folder.

Alternatively, click the **Add Materials** menu in the folder.

2. Select **Add Assignment**.

3. **Title** the assignment, and add optional instructions in the **Description** field.

4. Click the icons in the bottom-left corner of the Rich Text Editor to add files, links, Schoolology resources, or audio/video recordings.

5. Assign a **Due Date** to add the assignment to the Upcoming feed, the Calendar, and the Workload Planner. You can also add a time that the assignment is due.

If you do not enter a Due Date, the Assignment remains in the Assignments index or Course Folder.

6. Select or create a grading **category**. If you don't select a category for the assignment, the assignment will appear in the "ungraded" column in your Gradebook and any points associated with the item will not be calculated into the student's grade.

7. Choose how many **points** the assignment is worth.

8. Choose a **scale** or **rubric**, or create a new rubric.

9. Choose from Assignment **Options**.

10. Click **Create** to add the assignment to your course.

11. To edit an existing assignment, click the gear icon (in the upper-right corner of the page).

## Impressionism Assignment

After looking through the Passport to Paris Media Album, choose one of the paintings and write a story or poem based on the characteristics of that painting. Your work should address the following:

What is the most important feature you saw in the painting (mysterious, relaxing, etc.)

What is the relevance between the painting and your work?

For more information on Impressionism, you may want to read about it at the [Metropolitan Museum of Art website](#).



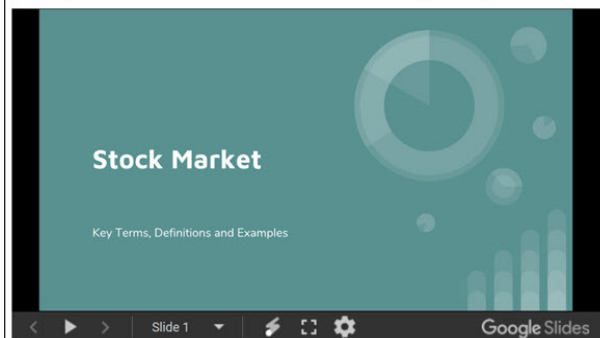
## Ideas for assignments

- Documentation or checklists
- Send your students on a museum tour
- Instructions for a Reading Assignment
- Project Outline with time line and links
- Embed slide decks, maps or videos

## US Stock Market - Introduction

During class today we began our conversation with discussing key terms, definitions and examples of the US Stock Market. Understanding the how the US economy works, struggles and recovers begins here. The slides from today's presentation are available for you to review.

Your first step in better understanding the stockmarket is to make your own slide presentation. Take 2 key terms and expand on their meaning. Find examples of those key terms and be prepared to present your information to the class. You will need to submit your slide presentation for class credit.



## Different ways to submit work

- Upload files
- Utilize the create feature
- Google Drive Assignment App
- Microsoft OneDrive Assignment App
- Be creative with the audio and video submission
  - Practice public speaking (video recording)
  - Record musical instrument practice (audio or video)
  - Have students record world language translations
  - Read aloud at home (audio recording)

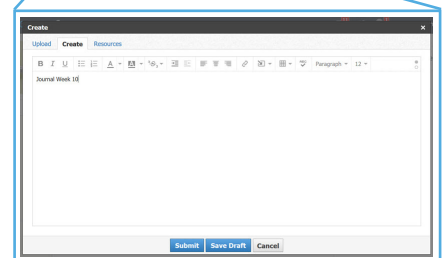
## Weekly Journal - Week 10

Due: Wednesday, February 14, 2018 at 11:59 pm

This weeks journal topic is time travel. Select a year to travel back in time to visit. Think about why you want to visit this time. Who might you run into? Where could you visit? How would you get get around (transportation)? What would you eat? Come up with your own questions to answer and write about.

Please remember to use complete sentences, with proper punctuation.

When you click on Submit Assignment, select **CREATE** this will allow you journal about your time travel. You can save your work as a draft and come back later to reread and then submit.



## Adding voice to our poems

We will be using Schoology to record one of our color poems. Think about the poems that you listened to in class and how will you use your voice and inflection to portray your words.

To record your poem, click Submit Assignment. Tap the microphone and record your poem. Submit your recording when you are done.